

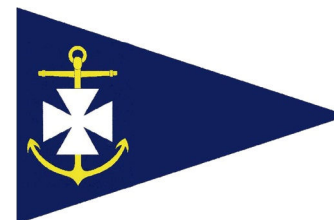
Long Courses

R indicates a Red number on a White background
W indicates a White number on a Black background

R 1	5 (P)	1 (S)	3 (S)	10 (S)	TM (S)	F (S)		
R 2	3 (P)	FR (S)	2 (S)	10 (S)	TM (S)	F (S)		
R 3	5 (P)	3 (P)	6 (S)	2 (P)	10 (S)	TM (S)	F (S)	
R 4	5 (P)	1 (S)	4 (P)	2 (P)	10 (S)	TM (S)	F (S)	
R 5	3 (P)	1 (P)	5 (S)	10 (S)	TM (S)	F (S)		
R 6	2 (P)	FR (P)	4 (S)	6 (S)	10 (S)	TM (S)	F (S)	
R 7	3 (S)	6 (S)	2 (P)	10 (S)	TM (S)	F (S)		
R 8	9 (P)	1 (P)	5 (P)	2 (S)	4 (S)	10 (S)	TM (S)	F (S)

W 1	5 (S)	10 (S)	TM (S)	F (S)				
W 2	3 (S)	10 (S)	TM (S)	F (S)				
W 3	6 (P)	3 (P)	10 (S)	TM (S)	F (S)			
W 4	5 (P)	1 (P)	10 (S)	TM (S)	F (S)			
W 5	4 (S)	10 (S)	TM (S)	F (S)				
W 6	2 (S)	10 (S)	TM (S)	F (S)				
W 7	FR (P)	1 (S)	5 (S)	10 (S)	TM (S)	F (S)		
W 8	6 (S)	10 (S)	TM (S)	F (S)				

(P) = Round mark to Port. (S) = Round mark to Starboard
FR identifies RUYC Red F mark



Ballyholme Yacht Club

Commodore David McMullan

Rear Commodore (Sailing) Mark Mackey

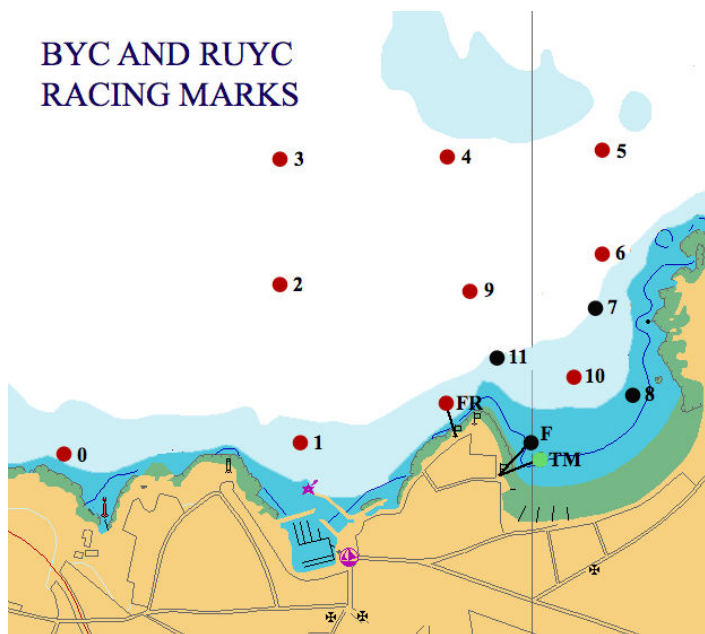
Rear Commodore (Shore) Ken Sharp

Hon. Secretary Pete McDowell

Hon. Treasurer Russell Rowley

Captain Jackie Patton

BYC AND RUYC RACING MARKS



BELFAST BST	
HW	09:24
LW	15:38

Saturday 20th July 2013

REGATTA

Sponsored by:

Looking for quality eyecare, prescription sunglasses or the latest contact lenses to help your sailing.

Mackey Opticians are the leading independent opticians around Belfast Lough with practices in Bangor, Holywood, Belfast, Newtownabbey and Carrickfergus.

See the latest sunglasses online from Oakley, Kaenon, RayBan and many others at www.mackeyopticians.com



SAILING INSTRUCTIONS

11. Sailing Instructions (SIs) Nos. 1 to 10 are contained within the current Belfast Lough Yachting Conference Regatta Programme Handbook and are applicable to this Regatta **EXCEPT AS AMENDED BELOW.**

11.1 In amendment of SI 1.2 any changes to the SIs will be posted before 09:00 hrs. on the front door of the BYC Clubhouse and at the entrance to Bangor Marina.

12. SIGNALS MADE ASHORE

Signals made ashore will be displayed from the BYC Flagpole and the Bangor Marina Flagpole. When flag 'AP' is displayed ashore, "1 minute" is replaced with "not less than 30 minutes" in Race Signals.

13. RACE AREA

All starts will be from a Committee Boat which will be anchored off Ballyholme Bay.

14. COURSES

For all races the course will be from the Starting Line to a yellow windward mark which shall be rounded to Port if the Committee Boat is displaying a Red flag or to Starboard if a Green flag is displayed.

14.1 Races 1 and 2 only

This will be followed by a number of more distant marks as displayed on the Committee Boat. Red numbers on a White background indicates that the mark shall be rounded to Port while White numbers on a Black background indicates that the mark shall be rounded to Starboard. The marks will be drawn from the following table:-

1	CSC Mark A (Yellow sphere) - near N 54° 42'.425 W 005° 46'.621
2	Cloghan Jetty buoy
3	Kilroot Q.G. (sync) G pillar near N 54° 42'.85 W 005° 42.85'
4	Blackhead Bay Yellow Buoy near N 54° 46.39 W 005° 41.29'
5	South Briggs buoy
6	RUYC/BYC No.1 Mark (Red sphere) - near N 54° 40'.2 W 005° 40'.13
7	Helen's Bay Q.R. (sync) R pillar - near N 54° 41.86 W 005° 42.85
8	Yellow Mark at Seahill - near N 54° 40'.4 W 005° 45'.9

14.2 Races 1 – 8 only

After rounding the yellow mark (and, in the case of **Races 1 and 2 only**, completing the course set in SI 14.1) boats shall then return to Ballyholme Bay, leaving Red Mark 10, Green Mark TM and Black Mark F, all to starboard.

Thereafter, boats shall sail one or more laps of the BYC Long Courses, as defined in the table on the back page and as indicated by the northerly board displayed on the front of the BYC Battery. Course diagrams are available on the BYC website (<http://www.ballyholme.com>).

14.3 Races 9 – 12 only

After rounding the yellow mark boats shall then return to Ballyholme Bay, leaving Black Mark 8, Green Mark TM and Black Mark F, all to starboard.

Thereafter, Race 9-11 boats shall sail one or more laps of the BYC Short courses and Race 12 boats will sail BYC Medium courses, as defined in the table shown and as indicated by the southerly board displayed on the front of the BYC Battery. Medium Courses have the same configuration as the Short Courses, but Marks 11 & 7 are replaced by large red Marks 9 & 6, respectively. Laminated course cards are available in the BYC foyer.

15. START

The start line will be between a mast displaying an orange flag on the committee boat at the starboard end and a green port-end mark.

16. FINISH

The finish will be an imaginary line drawn between the striped pole on the front of the BYC Battery to the Black Finishing Line Limit Mark F, located north of the Green Turning Mark TM.

17. TIME LIMIT FOR RACES 3 - 12

Boats failing to finish within 30 minutes after the leading boat in their class sails the course and finishes will be scored DNF. This amends RRS 35 and SI 9.

18. INSURANCE

Each participating boat shall be insured with valid third-party liability insurance with a minimum cover of £2,000,000 per incident or the equivalent.

19. RISK STATEMENT

Rule 4 of the Racing Rules of Sailing states: "The responsibility for a boat's decision to participate in a race or to continue to race is hers alone"

Sailing by its nature is an unpredictable sport and therefore inherently involves an element of risk. By taking part in the event, each competitor agrees and acknowledges that:

19.1 They are aware of the inherent element of risk involved in the sport and accept responsibility for the exposure of themselves, their crew and their boat to such inherent risk whilst taking part in the event;

19.2 They are responsible for the safety of themselves, their crew, their boat and their other property whether afloat or ashore;

19.3 They accept responsibility for any injury, damage or loss to the extent caused by their own actions or omissions;

19.4 Their boat is in good order, equipped to sail in the event and they are fit to participate;

19.5 The provision of a race management team, patrol boats and other officials and volunteers by the event organiser does not relieve the boat of their own responsibilities.

19.6 The provision of patrol boat cover is limited to such assistance, particularly in extreme weather conditions as can be practically provided in the circumstances

Short Courses

1.	11 (S)	8 (P)	7 (P)	TM (S)	F (S)		
2.	7 (P)	11 (P)	8 (S)	TM (S)	F (S)		
3.	11 (S)	7 (S)	TM (S)	F (S)			
4.	7 (S)	8 (S)	11 (P)	TM (S)	F (S)		
5.	11 (S)	8 (S)	TM (S)	F (S)			
6.	7 (S)	8 (S)	TM (S)	F (S)			
7.	7 (P)	11 (P)	7 (P)	11 (P)	8 (S)	TM (S)	F (S)
8.	11 (S)	7 (S)	11 (S)	7 (S)	TM (S)	F (S)	
9.	11 (S)	TM (S)	F (S)				
10.	7 (S)	TM (S)	F (S)				
11.	8 (S)	TM (S)	F (S)				

(P) = Round mark to Port. (S) = Round mark to Starboard