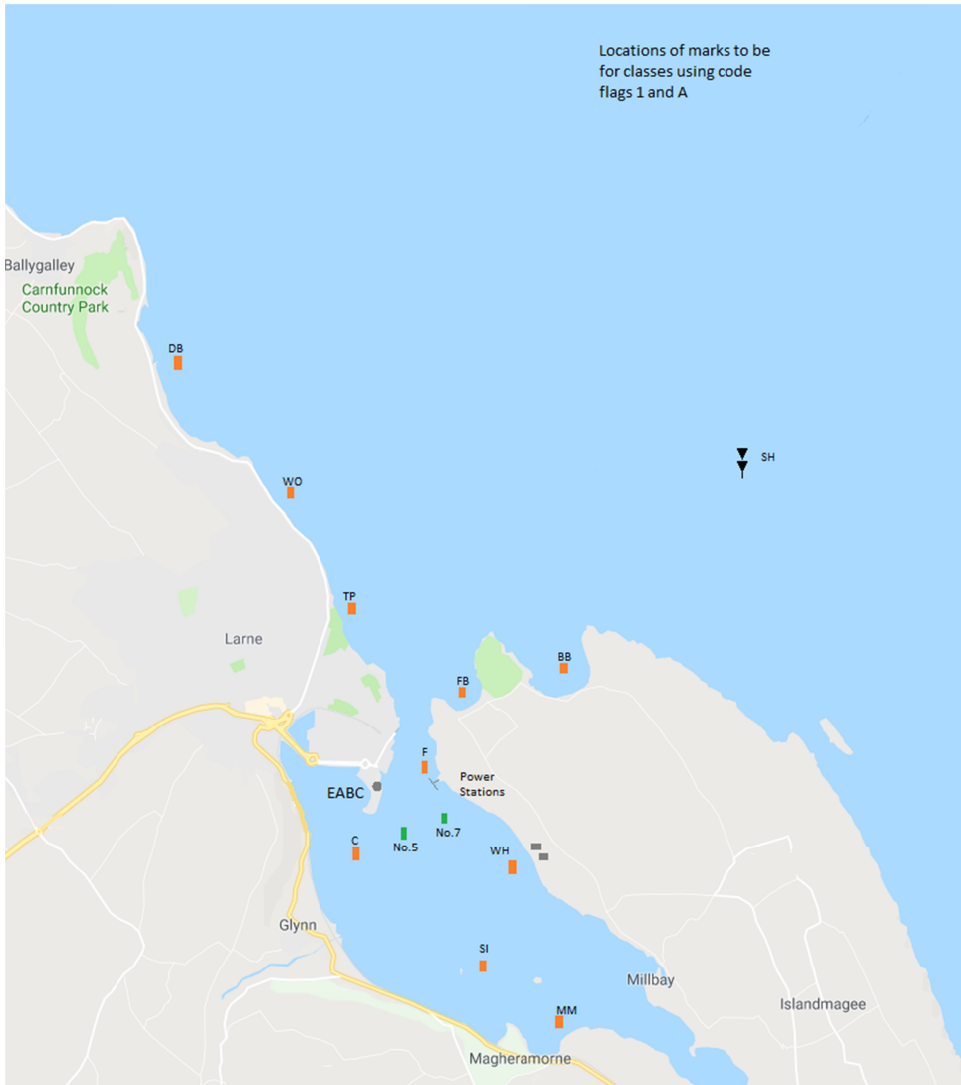


Locations of marks to be  
for classes using code  
flags 1 and A



#### NOTE

Arrangements can be made to provide Finishing Times for any BLYC Clubs which wish to organise Feeder Races to the Regatta. Please contact the Hon. Sailing Secretary.



# East Antrim Boat Club

Commodore	S. Kirby (Iolair Mhara)
Vice Commodore	R. Ford-Hutchinson
Rear Commodore	G. Doig (Jack)
Hon. Secretary	Ms K. Boyle
Hon. Treasurer	Ms C. Taylor
Captain	S. Liddle (Aries)
Hon. Sailing Secretary	R. Doig (Sirius)
Clubhouse	(028) 2827 7204
Info at	<a href="http://www.eabc.club">www.eabc.club</a>

***“ Larne Lough Weekend “***  
***6<sup>th</sup> & 7<sup>th</sup> July 2019***

# ***REGATTA***

Sponsored by

**LARNE  
PORT**

# SAILING INSTRUCTIONS

11. The current BLYC Standard Sailing instructions (SSIs) are downloadable from the BLYC website and should be read in conjunction with these SIs BLYC SSIs are applicable to this regatta except that SSIs 9 & 10 shall not apply.

## 12. STARTING

The location of the start line and the type of committee boat will be posted in the clubhouse on the Official Notice Board.

## 13. FINISHING

The location of the finishing line(s) will be posted in the clubhouse on the Official Notice Board.

## 14. TIME LIMIT

The time limit for each race is two hours. If, in any race one boat completes the course within this time, the time limit will be extended by 30 minutes. In the event of a class failing to finish a second or subsequent round (or course) within the time limit, the timings at the end of the last completed round shall be taken as the result of the race. This SI amends RRS 35.

## 15. COURSES

Descriptions of the courses to be sailed will be posted in the clubhouse on the Official Notice Board prior to the start of each race. Where possible, Olympic style courses will be sailed.

---

### RIGHT OF WAY (SPECIAL NOTE)

You are reminded that commercial ferries operate in the approaches to and within Lame Lough. The approach channel and manoeuvring zone are a **Narrow channel** and IRPCS Rule 9(b) applies. Small craft shall not impede commercial vessels operating within the approach channel and manoeuvring zone.

**YOU HAVE ABSOLUTELY NO RIGHT OF WAY** (even if becalmed). You are advised to use the east (Power Station) side of the Lough where possible to avoid danger from, and inconvenience to, commercial shipping.

## 16. START TIMES AND CLASS GROUPING

16.1 Class	Sat AM	Sat PM	Sun AM	Sun PM	Code Flag
Unrestricted	11:00	14:30	11:00	*	No. 1
Whitesail	11:05	14:35	11:05	*	A
Dinghy Handicap	11:10	14:40	11:10	*	H
Mirror, Topper & Optimist	11:15	14:45	11:15	*	F

\* As soon as possible on completion of Sunday AM race

16.2 Cruisers wishing to race under Numeral Pennant No. 1 shall, prior to their preparatory signal, confirm which class they intend to compete in.

16.3 If requested, the Race Committee may provide separate starts for some of the classes shown above, or may add new classes. The normal criterion that will be applied is that there should be a minimum of 5 starters.

---

## PRIZES

Prizes will be awarded after each day's event for the overall result for that day. .

## HIGH WATER (LARNE)

Saturday 6 <sup>th</sup> July 2019	14:35 BST
Sunday 7 <sup>th</sup> July 2019	15:33 BST

## REFRESHMENTS

Catering will be provided after each day's event and bar facilities will be available throughout the Regatta.

Saturday Lunch      A light lunch will be provided free to all competitors

Saturday              A BBQ will be provided starting at 17:00

Sunday                A light lunch will be provided free to all competitors