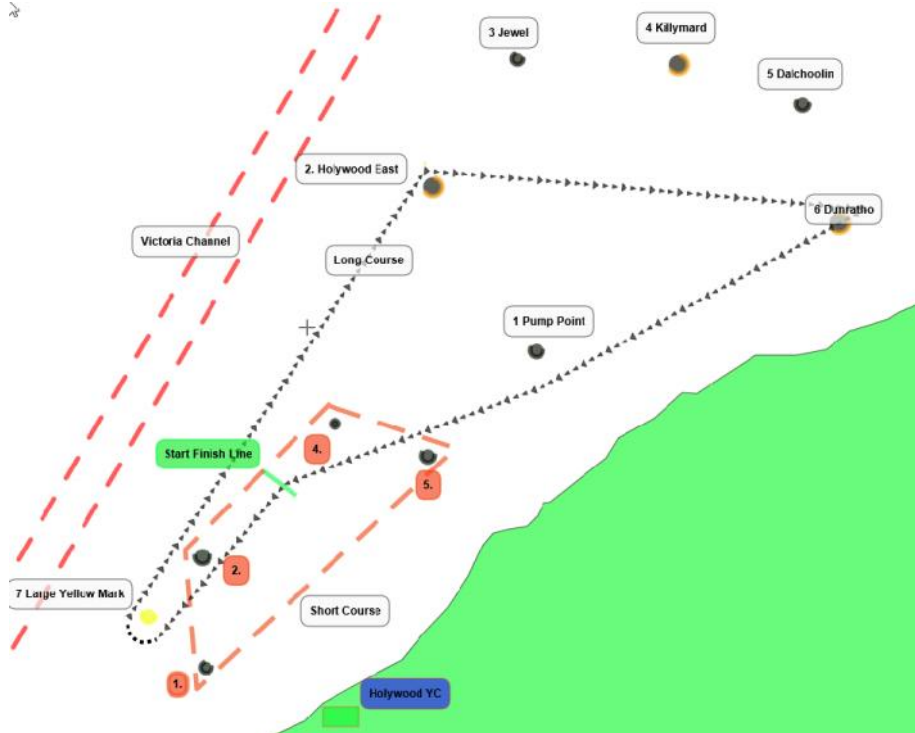


2



# Hollywood Yacht Club

<b>Commodore</b>	<b>Craig Cowan</b>
<b>Vice Commodore</b>	<b>Richard Wallace</b>
<b>Rear Commodore</b>	<b>Conor Byrne</b>
<b>Secretary</b>	<b>Anthony Hayes</b>
<b>Treasurer</b>	<b>Roger Watts</b>
<b>Sailing Secretary</b>	<b>Stephen Rutherford</b>
<b>Rescue Officer</b>	<b>Barry Sheridan</b>
<b>RTC Principal</b>	<b>Cliff Burns</b>
<b>Membership Secretary</b>	<b>Carol Stewart</b>
<b>Member</b>	<b>Christine Picton</b>

Website: [www.hollywoodyachtclub.co.uk](http://www.hollywoodyachtclub.co.uk)  
 Facebook: @ HollywoodYC

*Saturday 16<sup>th</sup> June 2018*

# REGATTA

# SAILING INSTRUCTIONS

## 11. STANDARD SAILING INSTRUCTIONS

The current BLYC Standard Sailing instructions (SSIs) are downloadable from the BLYC website and should be read in conjunction with these SIs. They all apply to this regatta.

## 12. CLASSES AND START TIMES

Races will be held for all classes.

## 13. START / FINISH LINE

The Start / Finish Line is an imaginary line between the mainmast of a Committee Boat and an Outer Limit buoy, located west of Mark 4 (see diagram).

## 14. COURSES

14.1 The Course will be displayed on the committee boat at the preparatory signal for the first class. Buoys should be rounded in the sequence displayed on the committee boat, running left to right.

If a green flag and the letter 'S' is displayed on the Committee Boat all course marks are to be rounded, leaving them to Starboard (Starboard-hand Course).

If a red flag and the letter 'P' is displayed on the Committee Boat all course marks are to be rounded, leaving them to Port (Port-hand Course).

This SI amends RRS Race Signals.

14.2 Races 1 to 7 and Race 11: Two rounds of the Long Course.

14.3 Races 8 to 10: Three rounds of the Short Course

14.4 All marks of the course are buoys.

14.5 The configuration of the Long Course and/or the Short Course may be altered by the Race Committee displaying, on the committee boat, the letters and/or numbers of the marks to be rounded. If no letters or numbers are displayed (other than the 'S' or 'P') all marks of the appropriate course are to be rounded.

14.6 The Start/Finish Line forms part of the course.

## 15. SHORTENED COURSE

A course may be shortened at any stage of the race at the discretion of the Race Officer. RRS 32.1 is amended by the following addition: "(f) for any other reason at the discretion of the Race Officer". In amendment of RRS Race Signals no sound signal will be made when displaying code flag 'S'.

## 16. SPECIAL REQUIREMENTS

Competing boats shall not enter the Victoria Channel.

**HIGH WATER:** 13:51 BST

Crews of competing boats are invited to tea in the Clubhouse after racing.

## PRIZES

A prize will be awarded to the winning boat in each Class with three or more starters. The Prize Distribution will take place immediately after the conclusion of racing or otherwise at the discretion of the Race Committee.

All visitors are welcome to stay for live music, performed in the clubhouse after the prizegiving.

## IMPORTANT SAFETY NOTICES

The attention of all helmsmen and crew is drawn to the overhead power cables at the entrance to the Council Car Park adjacent to the launching slipway.

Particular attention should be paid to the wash from ferries, especially by dinghies launching and recovering on the slipway.

## RESCUE

All rescue boat crews are requested to report to the H.Y.C. Rescue Officer.